

September 2011

NEWS

Committed to those we serve

Your Touchstone Energy® Cooperative



2011 Goodhue County Fair

Goodhue County Cooperative Electric again sponsored several of the plaques and trophies that were awarded to 4-Her's during the fair. The winners are listed below.

Katelyn Pearson of Welch, daughter of Emmett and Elizabeth, won the Champion Electric Project Grades 3-5.

Cole Haferman of Zumbrota, son of Tim and Chrystine, won the Champion Electric Project Grades 6-8.

Tanner Borgschatz of Pine Island, son of Gary and Sandra, won the Champion Electric Project Grades 9+.

Katie Fitzgerald of West Concord, daughter of David and Ann, won the Champion Beginner Beef Showmanship.

Madison Schafer of Goodhue, daughter of Brandon and Monica, won the Champion Intermediate Beef Showmanship.

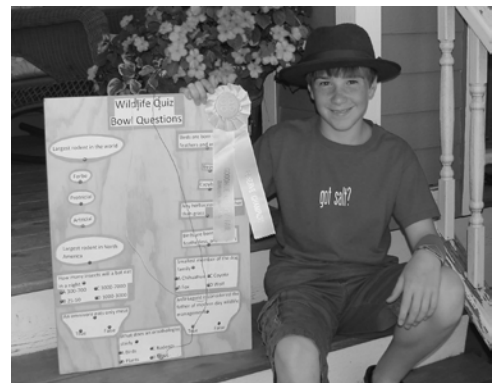
Maddie Breuer of Lake City, daughter of Scott and Beth, won the Grand Champion Jumping Figure 8 Grade 9+.

Mikayla Piller of Kenyon, daughter of Greg and Wendi, won the Grand Champion Poles Grades 9+.

Rachel Serkasevich of Welch, daughter of Sue and Gary, won the Grand Champion High-Point Novice.

We also sponsored a dairy premium special award and bought a premium at the 4-H Livestock Auction - Tanner Carlson's market barrow. Tanner is the son of Tim and Melanie of Welch.

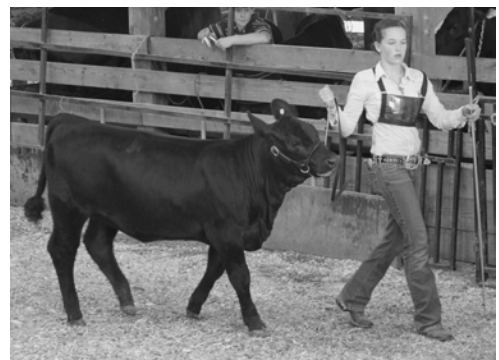
Congratulations to all the 4-Her's that participated in the 2011 Goodhue County Fair!



**Cole Haferman and his
Champion Electric Project**



Maddie Breuer and her Horse Lilly



Madison Schafer and her Spring Calf



Printed on recycled paper containing
10 percent post-consumer waste.

COLD WEATHER DISCONNECTS

Section 216B.097 was added to the Public Utilities Act effective August 1st 1991. The law provides that cooperative and municipal utilities cannot disconnect a residential consumer between Oct. 15 and April 15 if the disconnection affects the primary heating source, provided that certain conditions are met.

The conditions include that the member must declare, on forms provided by the cooperative, an inability to pay and the household income of the customer is less than 50 percent of the state median income. In addition, the customer's account must be current for the billing period immediately prior to October 15th or, in the alternative, the customer has entered into and is reasonably current on a mutually acceptable payment schedule.



To avoid electric disconnection, arrangements for bill payment need to be made before the line crew is sent to collect. Do not disregard your bill. It is your responsibility. If you are having financial difficulties, please contact our office to discuss payment arrangements.

Several agencies provide financial assistance to qualifying households. We urge you to contact them to avoid disconnection if you feel you are eligible for assistance.

Three Rivers Citizen Action Council
Zumbrota MN (507) 732-7391

Goodhue County Social Services
Courthouse, Red Wing MN
(651) 385-3232

Heat Share, Minneapolis MN
1-800-842-7279

GOODHUE COUNTY COOPERATIVE ELECTRIC

1410 Northstar Drive • Zumbrota MN 55992
(507) 732-5117 or (800) 927-6864

Office Hours Monday - Friday
7:00 a.m. to 3:30 p.m.

Web site: www.gceca.com

For Underground Locations

Call Gopher State One-Call 1-800-252-1166

STAFF

Doug Fingerson, General Manager

Dennis Wilson, Financial Manager

Darel Birmingham, Member Services

Doug Borgschatz, Line Supt.

BOARD OF DIRECTORS

Ed Bauman, President	Dist. No. 2
David Hernke, Vice-President	Dist. No. 4
Rob Tate, Secretary	Dist. No. 5
Gary Shelstad, Treasurer	Dist. No. 8
Gerald Puppe	Dist. No. 1
Mary Lindahl	Dist. No. 3
Richard Sviggum	Dist. No. 6
Gene Bang	Dist. No. 7
Don Buck	Dist. No. 9

Remember to call 1-800-252-1166

For all your underground facilities locating needs.

**GOPHER
ONE**



**STATE
CALL**

The Cooperative will locate only up to the meter; it is the Member's responsibility to have the underground wires beyond the meter located.

METER NUMBERS

Edward Linton Jr. of Dennison and Kenneth Frazier of Welch found their meter numbers in the August newsletter and received credit on their electric bills. Gerold Lingle of Cannon Falls, Wm Roper of Goodhue and Tim Meyer of Cannon Falls missed their meter numbers.

The following meter numbers are worth \$10.00 each. If your meter number is one of the following numbers, notify us by October 4th 2011 and you will receive a \$10.00 credit on your electric bill:

30-2718 30-597 30-3974 30-4207 4095

Conservation and Electric Rates: A Balancing Act

Goodhue County Cooperative Electric puts a lot of effort into helping its members conserve energy. Conservation may seem like an odd pursuit for an electric cooperative – a business helping its members buy less of the very product it sells. But there are two important reasons why Goodhue County Cooperative Electric helps its members become more efficient.

First, the state of Minnesota requires it. Goodhue County Cooperative Electric is subject to the Conservation Improvement Program, a state law that requires every electric utility to prove energy savings equivalent to 1.5 percent of their annual retail energy sales.

Second, conservation saves members money. Conservation is an ounce of prevention to avoid a pound of cure. In this case, the cure is more than a pound – it's a multimillion-dollar power plant. By

Conservation = lower bills
Even if rates go up, your bill doesn't need to. The most direct way conservation benefits cooperative members is that they need less electricity. Using less electricity helps members better manage their monthly electric bills.

reducing energy sales, conservation does slightly increase the price of electricity. However, in most cases it's less expensive than investing in a new power plant.

We are going to meet future demand in one of two ways: by continuing to invest in additional generation resources or by helping our members conserve electricity. As a member-owned cooperative we'd rather invest in our members. Encouraging our members to participate in our energy conservation efforts such as installing CFLs or new ENERGY STAR appliances provides a continuous stream

of energy savings over the life of the energy-saving measure. This energy savings helps to reduce future wholesale rate increases and provides a valued service to our members."

Interested in learning how to conserve more electricity? Call Goodhue County Cooperative Electric at 800-927-6864 for more information.

Does Your Heating System Need Replacing?

If your heating system needs replacing, consider an energy-saving heat pump! A heat pump will not only heat your home in the winter but it will also cool your home in the summer.

We offer rebates on heat pumps and you will also save money on your monthly electric bills because you get a low heating rate. With our rebates and special electric rates, your heat pump will be paid for in a short time.

A heat pump is very energy efficient and has a low operating cost. Plus, you can get the same low electric rate for your water heater.

Now is a great time to consider supplementing your current furnace with an electric heat pump. When the temperature drops on the coldest days, your existing furnace takes over. Since the number of hours your furnace operates is reduced, you extend its life at the same time you are saving substantially on fuel costs. Call us today at 800-927-6864 for more information!



Employee Jared Zillgitt recently became a certified journeyman lineworker. It takes four years of on-the-job training, studying and testing to become certified. Jared is a graduate of the electric lineworker program at Minnesota West Technical College in Jackson.

Congratulations Jared!

Make Safety a Priority This Harvest Season!

The leading cause of on-farm electrocutions in the Midwest is accidental contact with overhead power lines. Especially prevalent are accidents involving augers near grain bins.

This is because the workers who are on the ground moving the equipment provide a direct path for electricity to flow through them the instant contact is made with the power line.

These accidents are totally preventable. Before you begin harvesting, spend some time reviewing safe work practices with all farm workers, regardless of how many years they have been helping with this. Everyone should know the location of power lines. Use a spotter when moving portable equipment in the vicinity of power lines. Keep a safe distance by



using this rule ~ Maintain a minimum distance of ten feet, 360 degrees ~ that means below, to the side, and above power lines. Also be mindful that wind, shifting weight, uneven ground and other factors can unexpectedly pitch your equipment dangerously close to power lines.

Always lower portable augers or elevators to their lowest possible level before moving or transporting them. Be careful not to raise any equipment such as ladders, poles or rods into power lines. Remember, non-metallic materials such

as lumber, tree limbs, tires, ropes and hay conduct electricity depending on the dampness, dust and dirt contamination.

Have a Safe Harvest Season!

MONTHLY RECIPE CONTEST

Members of GCCEA are asked to send in their favorite recipes. We will then select two winners each month to print and they will each receive a \$10 credit on their electric bill so send in your favorite recipes today.

*Helen Tomforde of Frontenac
sent her recipe for
Company Casserole*

One 6-oz pkg wild rice cooked according to package directions
10 oz pkg frozen broccoli, thawed & drained (in season, use fresh)
1 1/2 C cubed cooked chicken
1 C fully cooked ham, cubed
1 C shredded cheddar cheese
4 oz mushrooms, drained
1 C mayonnaise 1 t prepared mustard
1/2 to 1 t curry powder 1 can cream of mushroom soup
1/4 C grated parmesan cheese

Grease 2 qt casserole. Layer first six ingredients in order listed. Combine mayo, mustard, curry & soup. Spread over top and sprinkle w/ parmesan cheese. Bake at 350 for 45-60 min.

*Michelle Lehman of Kenyon
sent her recipe for
Banana Cake*

1 yellow cake mix (Michelle uses the pudding-in-the-cake mix)

Mix cake according to package directions. Add 3 ripe bananas, mashed, and 1 t baking soda. Mix and bake in 9x13 pan according to directions on the cake mix box. It may take a little longer than the directions state. Cool.

Frosting: Mix 1 small box vanilla or banana instant pudding and 1 C milk together for 1 to 2 min. Add 8 oz Cool Whip. Spread on cake and keep refrigerated until serving.